

# AMS

Automation & Manufacturing Services



## AMS your Industry 4.0 automation partner





AMS projects & references

## **YOUR AUTOMATION PARTNER**

**A M S** is a young, International and dynamic full service supplier in automation projects with several divisions worldwide. Being specialized in ROBOTICS, PLC and OFFLINE programming AMS is your partner in automation projects and turnkey solutions. Your key to support you into your IND.4.0 projects.

**AMS = QUALITY and TOTAL SOLUTIONS**

# AMS references and site locations

Actual running projects and references

## EUROPE :

- FORD
- VW
- BMW
- AUDI
- Mercedes
- VOLVO
- PORSCHE
- SEAT
- DAF
- OPEL GM
- TOWER

## GLOBAL :

- TATA
- BMW
- AUDI
- DC
- Mercedes
- VOLVO China
- CHERY
- OPEL GM
- SUZUKI
- CAMPINA
- DALIAN
- DEMC

## EUROPE / GLOBAL

- VOLVO Belgium (40-series)
- FRIESLAND CAMPINA (Edam)
- BMW The Netherlands (BMW Mini)
- MERCEDES Germany (Sprinter)
- AUDI Belgium (E6)
- AUTOMATION projects
  - Iran (automatic line)
  - Belgium (brewery handling)
  - Kroatia (tabac handling)
  - Belgium (brick handling)
  - Belgium (glueing/tape)

## ROBOMOULD

- PLASTIGI (full automatic 3 robots)
- KUMAGAYA (manual 4 robots)
- ROTOPLAST (manual 2 robots)
- The NETHERLANDS (6 robots from 2012)
- Australia (1 proj)
- New Zealand (1 proj)
- Germany (1 proj)



# AMS AUTOMATION in 2016

The flexibility and power of a small niche player in a global market towards our customers

## AUTOMOTIVE & TIER 1-2

- Growth worldwide and turnkey projects
- Services and global organizations
- Fast growth China, Brazil, Mexico

## FOOD INDUSTRIES

- Cheese
- Beverages
- Biscuits
- Chocolades
- Handling process & supervision - inspection – automation

## FACTORY AUTOMATION

- E-commerce, automated warehouses
- Process Machine loading and unloading (drilling, milling, bending, ...)
- Airport

## PLASTIC & Rotational Moulding

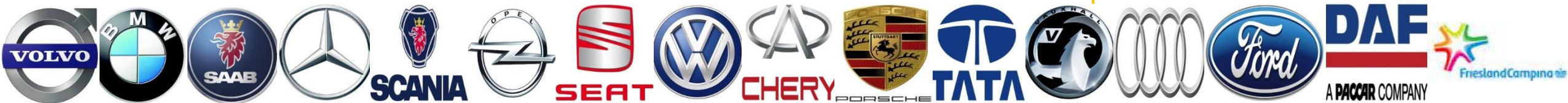
- Robomould, worldwide patented innovative rotational moulding process / machine
- Loading, unloading machinery

## GAMING Industries

- 4D gaming industries
- Simulation
- Gaming and leisure industries from single robot to platform
- Drone technology

## HEALTHCARE and services

- Elderly people
- Humanoide robot

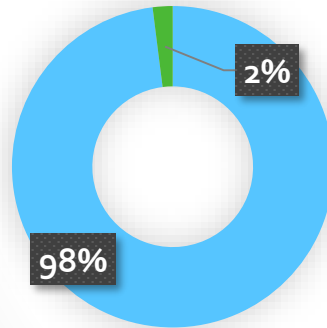


# Johan Potargent

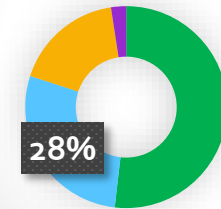
## Johan Potargent Consultancy bvba - JPC bvba (2000)

Johan Potargent

Laurens Potargent



## AAT Automation GmbH



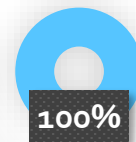
Fam.Kaiser  
J.Potargent  
H.Jessner  
G.Baier

## AMS Belgium bvba (2006)



JPC bvba

## AMS Trento BV automation (2015)



JPC bvba

## AMS The Netherlands bv (2007)



AMS Belgium bvba

## AMS Slovakia sro (2017)

## AMS USA (2017)

## Mertisoft BV electrical cabinets building & mfg (2013)



JPC bvba  
Mertisoft BV

## JPG packaging – mfg (2010)

## AMS HK Ltd automation (2013)

## AMS RSA Ltd automation...

# AMS in automation projects from 2006 until 2016

From engineering, design towards full turnkey automation projects development & management

## AMS BE/NL = 20p

- Mgt = 1 + team = 2
- OLP = 2
- Commissioning = 11
- Eng and R&D = 2
- Services = 2

## AMS SA = 2p

- Mgt = 1
- Office admin = 0
- Commissioning = 1
- OLP = 0

## AAT DE = 28p

- Mgt = 1 + team = 5
- Office admin = 2
- Commissioning = 12
- Eng and R&D = 5
- Services = 3

## AMS Projects

Robot  
PLC programming  
Commissioning  
Project Mgt  
Site Mgt  
Standby  
Training  
Services  
E-plan

## AMS Engineering

Engineering  
Design  
Process simulate  
3D lasertracking  
OLP & Virtual  
Commissioning

## AMS Innovation

Robomould, ATES,  
Logistics &  
handling,  
Mixed Palletizing,  
Factory of the future

## AMS Academy

Training & software  
services

## JPG Tooling & equipment



# AMS from 2016 towards 2021

Turnkey automation solutions with more support from OLP and VIBN and Robomould into Fiber Technology

|   |   |  |   |   |   |
|---|---|--|---|---|---|
| <b>AMS BE/NL = 30p</b> <ul style="list-style-type: none"> <li>• Mgt = 1 + team = 2</li> <li>• OLP = 2</li> <li>• Commissioning = 4</li> <li>• Eng and R&amp;D = 2</li> <li>• Services = 2</li> </ul>        | <b>AMS Projects</b> <p>Robot<br/>PLC programming<br/>Commissioning<br/>Project Mgt<br/>Site Mgt<br/>Standby<br/>Training<br/>Services<br/>E-plan</p>                | <b>AMS Engineering</b> <p>Engineering<br/>Design<br/>Process simulate<br/>3D lasertracking<br/>OLP &amp; Virtual<br/>Commissioning</p> | <b>AMS Innovation</b> <p>Robomould, ATES,<br/>Logistics &amp;<br/>handling,<br/>Mixed Palletizing,<br/>Factory of the future</p>  | <b>AMS Academy</b> <p>Training &amp; software<br/>services</p>                    | <b>JPG Tooling &amp; equipment</b>  |
| <b>AMS USA/SK/PO = 3x10p</b> <ul style="list-style-type: none"> <li>• Site Mgt = 1</li> <li>• Commissioning = 7</li> <li>• OLP = 2</li> </ul>   | <b>AMS Proj. to do</b> <p>Project Mgr +2p<br/>Slovakia setup +10p<br/>Slovakia Mgr +2p<br/>Admin. Org. 1p<br/><br/>Cluster organization<br/>up to full services</p> | <b>AMS Eng. to do</b> <p>OLP invest 4 lic<br/>Plant Simulate 1lic<br/>OLP +6p<br/>VIBN +2p</p>   | <b>INNOVATION to do</b> <p>Mould XL<br/>Labomould<br/>QUB curve<br/>Fiber technology<br/>OLP to SIM to GEN<br/>BIAX software<br/>CO2 cooling<br/>Service organization</p> | <b>Academy to do</b> <p>Sales traject<br/>Organization<br/>Syntra cooperation</p> | <b>Tooling to do</b> <p>Hall preparation<br/>Invest design SW<br/>Tube insert</p> |
| <b>AAT DE = 32p</b> <ul style="list-style-type: none"> <li>• Mgt = 1 + team = 5</li> <li>• Office admin = 2</li> <li>• Commissioning = 12</li> <li>• Eng and R&amp;D = 5</li> <li>• Services = 3</li> </ul> |   |  |   |   |   |



# AUTOMOTIVE automation, workcells & projects

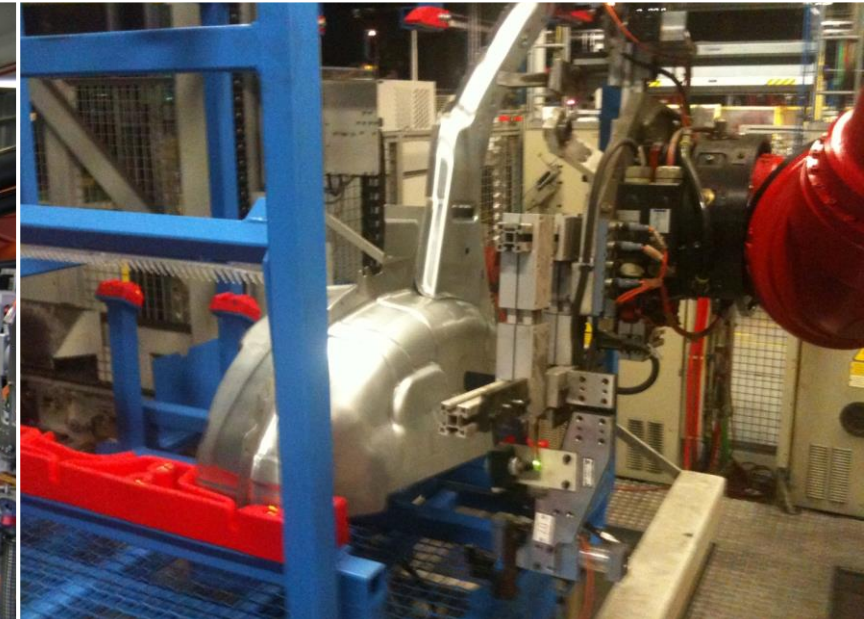
AMS supports our customers worldwide in global partnership and expertise



Tata India – 384 robots commissioning



BMW China – 124 robots commissioning



Volvo Ghent – 396 robots commissioning

- Robot & PLC programming project
- Robots = 384
- PLC = 26

- Turnkey robot & PLC programming project
- Nominated best supplier
- Robots = 124
- PLC = 14

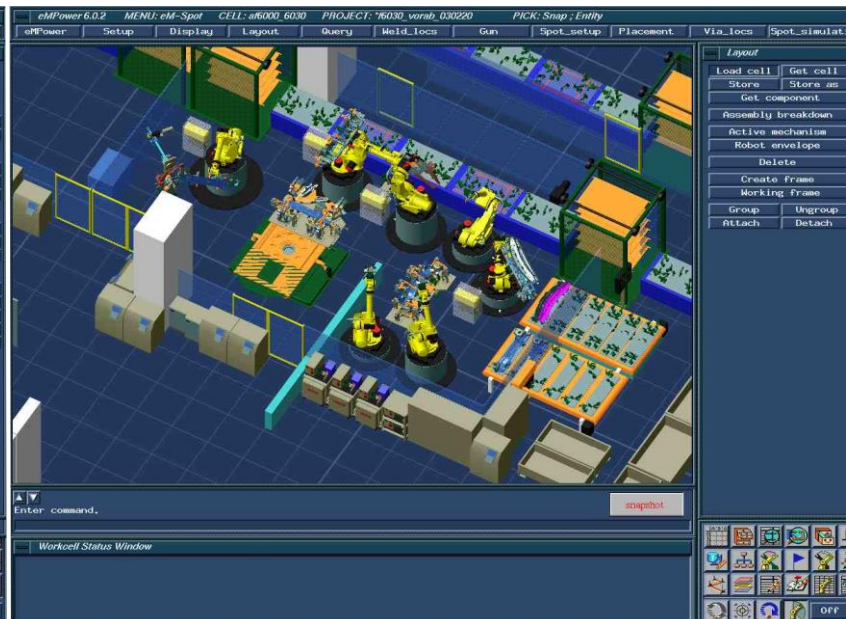
- Turnkey robot & PLC programming project
- Nominated best supplier
- Robots = 396

# AUTOMOTIVE automation, OLP

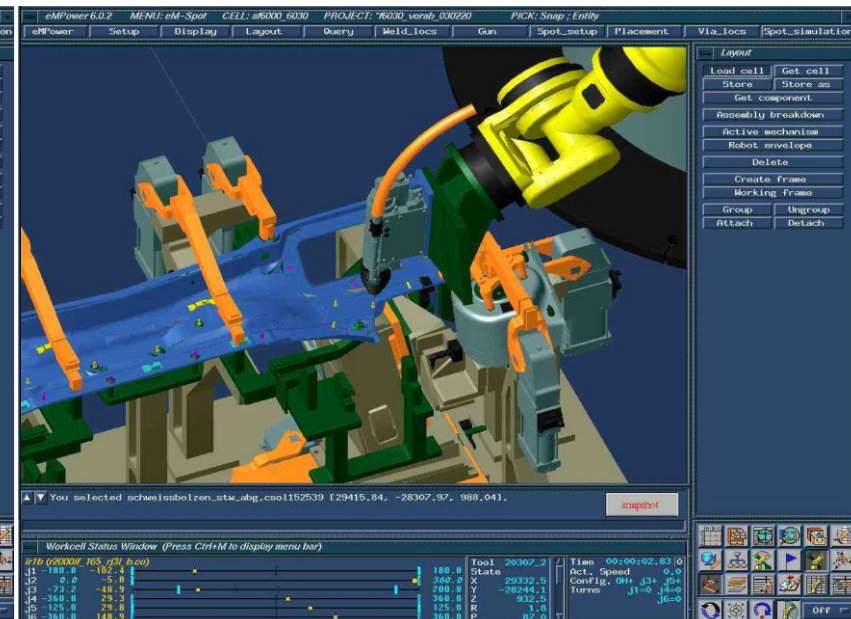
AMS supports our customers worldwide in global partnership and expertise



VOLVO – robotics simulate



OPEL VAUXHALL - Elsmeport



AUDI – OLP support

- Robot & PLC programming project
- Robots = 24
- OLP = 24 robots

- Turnkey robot & PLC programming project
- Robots = 48
- OLP = 24

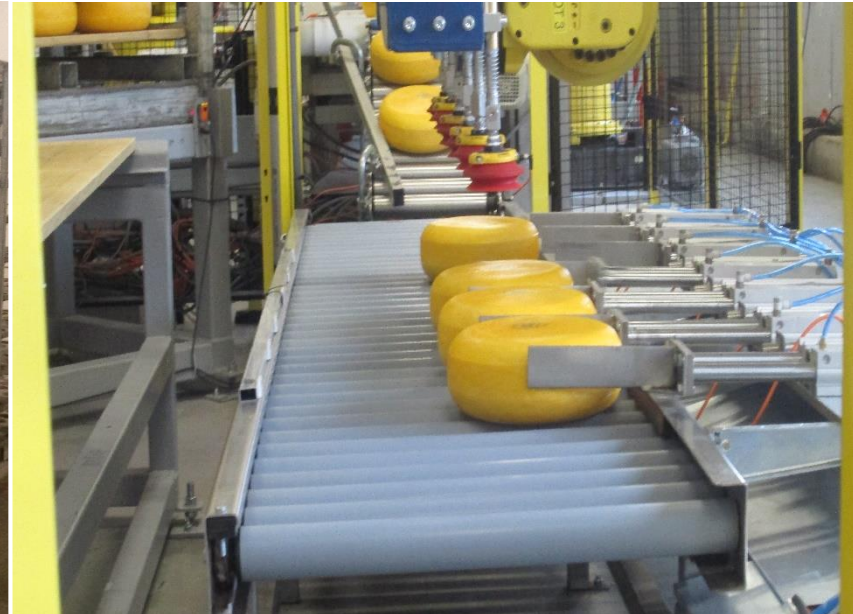
- Turnkey robot & PLC programming project
- OLP, PLC support
- Robots = 37

# FOOD automation, workcells & projects

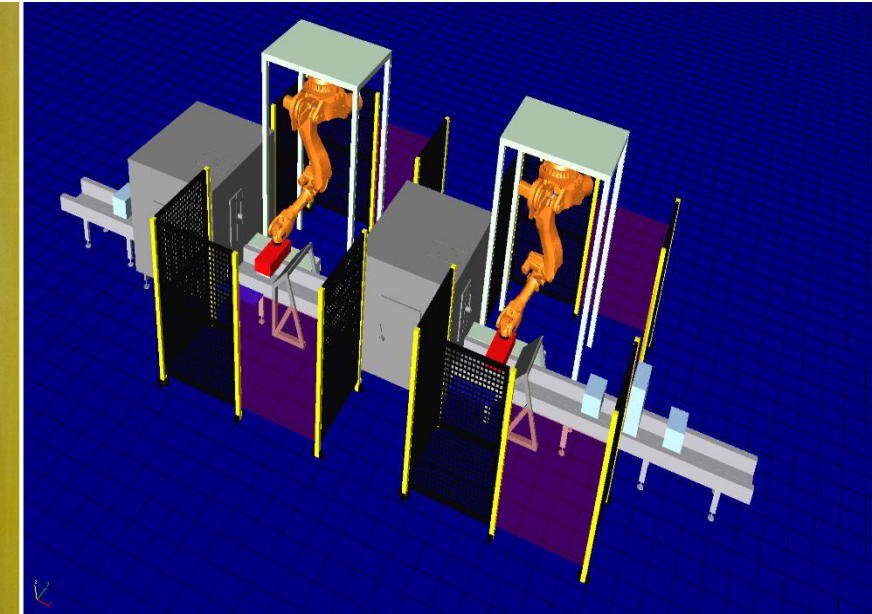
AMS supports our customers worldwide in global partnership and expertise



Friesland Campina – Edam cheese



Friesland Campina – Gerkesklooster



WDS – chocolate printing

- Robot & PLC programming project
- Robots = 28
- PLC = 8
- AGV systems = 8

- Turnkey robot & PLC programming project
- Robots = 4
- PLC = 3

- Turnkey robot & plc program chocolate printing
- Running project
- Robots = 2

# FOOD automation, workcells & projects

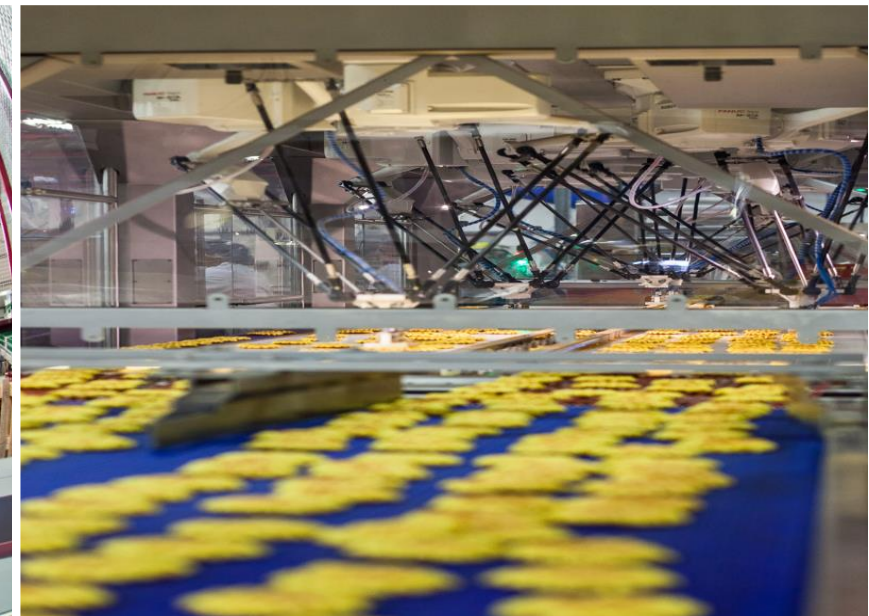
AMS supports our customers worldwide in global partnership and expertise



Friesland Campina – Edam cheese



FOOD - vegetable



FOOD - biscuits

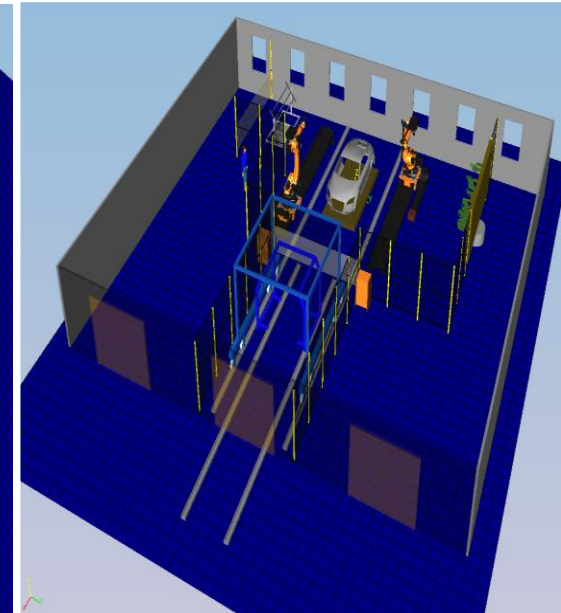
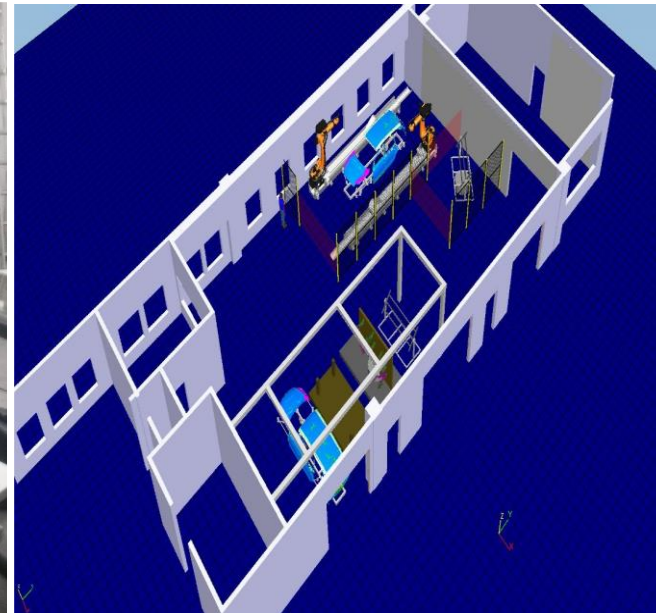
- Robot & PLC programming project
- Robots = 28
- PLC = 8
- AGV systems 8

- Turnkey robot & PLC programming project
- Robots = 4
- PLC = 1

- Turnkey robot & plc programming food line
- Biscuits
- Robots "spiders" = 8

# Measurement and automation

Industrie 4.0 – Factory of the future



FULL automated 3D scanning & measurement application

- FULL automated 3D scanning & laser measurement cell
- Fast, accurate on 0,002mm
- Complete camera and vision system integrated
- Complete offline programming package adapted to this system
- Turnkey installations in the automotive for complete in line car measurement and data comparison

# 5D MACHINING and automation

Industrie 4.0 – Factory of the future



FLANDERS BIKE VALLEY windtunnel

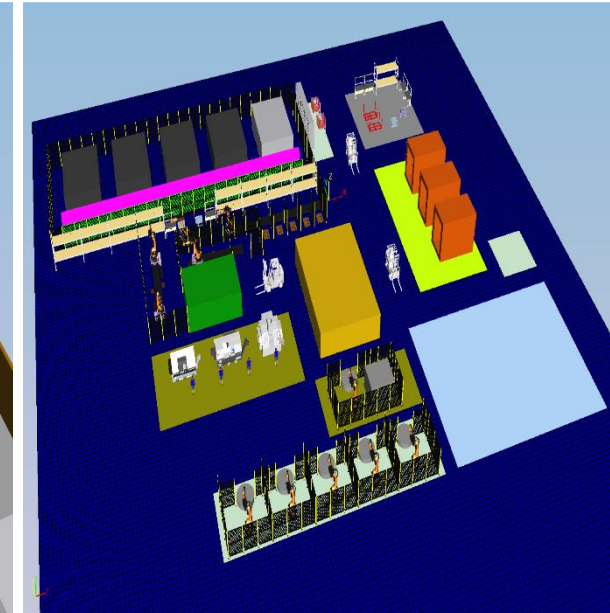
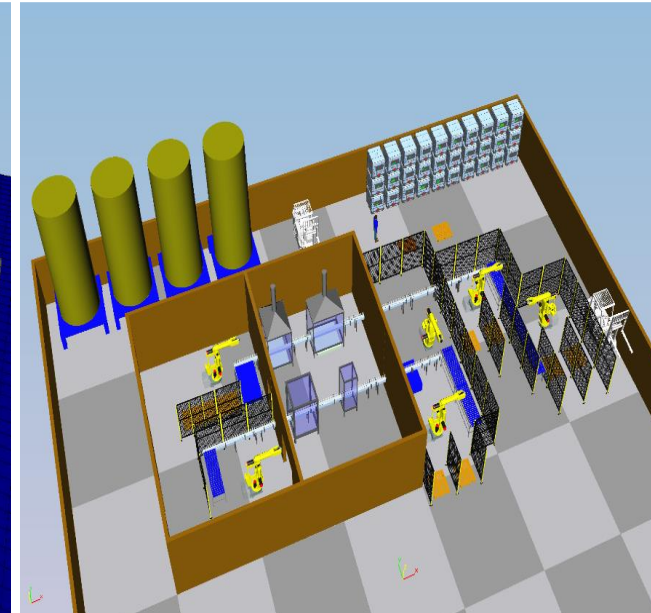
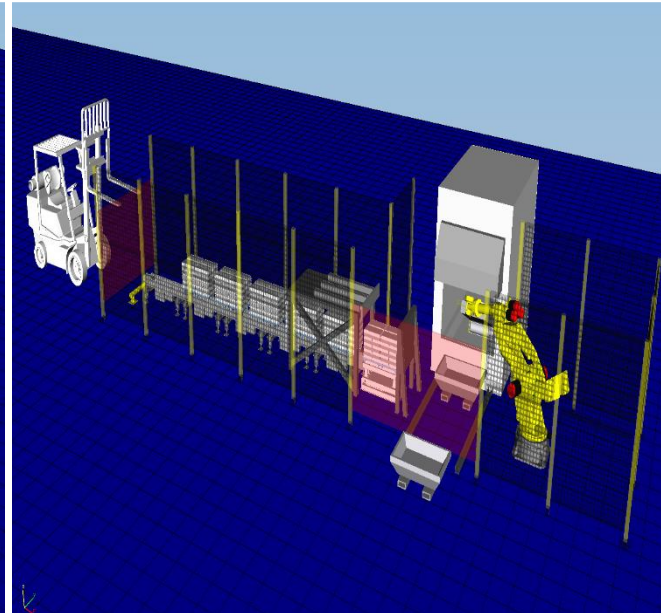
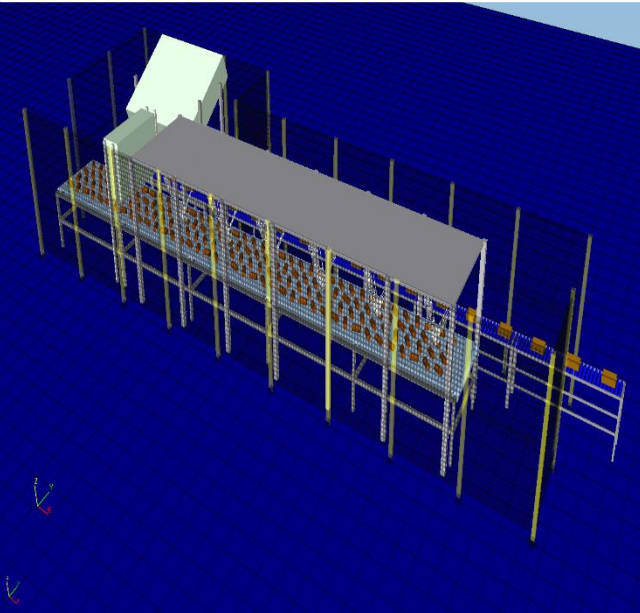
- Robot 3D scanning process & integrated machining facility 6 axis

- Robotized laser welding and scanning equipment accuracy less than 0,01mm

- Flanders Bike Valley application (scan T.Martin for windtunnel)

# FUTURE designs and automation

Industrie 4.0 – Factory of the future



FULL automated 3D scanning & measurement application

- From Belgium chocolats and truffles ...
- Towards automated handling line ingots in the steel industries

- Turnkey installation for handling bottles and filling off installations
- Full automated manufacturing plant for machining (drilling, milling) applications in the automotive and medical sector

# INTRA-LOGISTICS and automation... with AAT

Industrie 4.0 – Factory of the future



INTRALOGISTICS and several automation projects

- Robot & PLC programming project
- Robots = 2
- PLC = 1
- Mixed Palletizing systems for food & logistics
- Systems installed combined with automatic cranes
- Moving robots on AGV systems assembled
- Complete safemove integrated

# AMS

Automation & Manufacturing Services



## AMS ROBOMOULD manufacturing



**Automation**  
*for your  
business*



# ROBOMOULD and plastics manufacturing

Partners

BUILDING  
OUR FUTURE  
TOGETHER

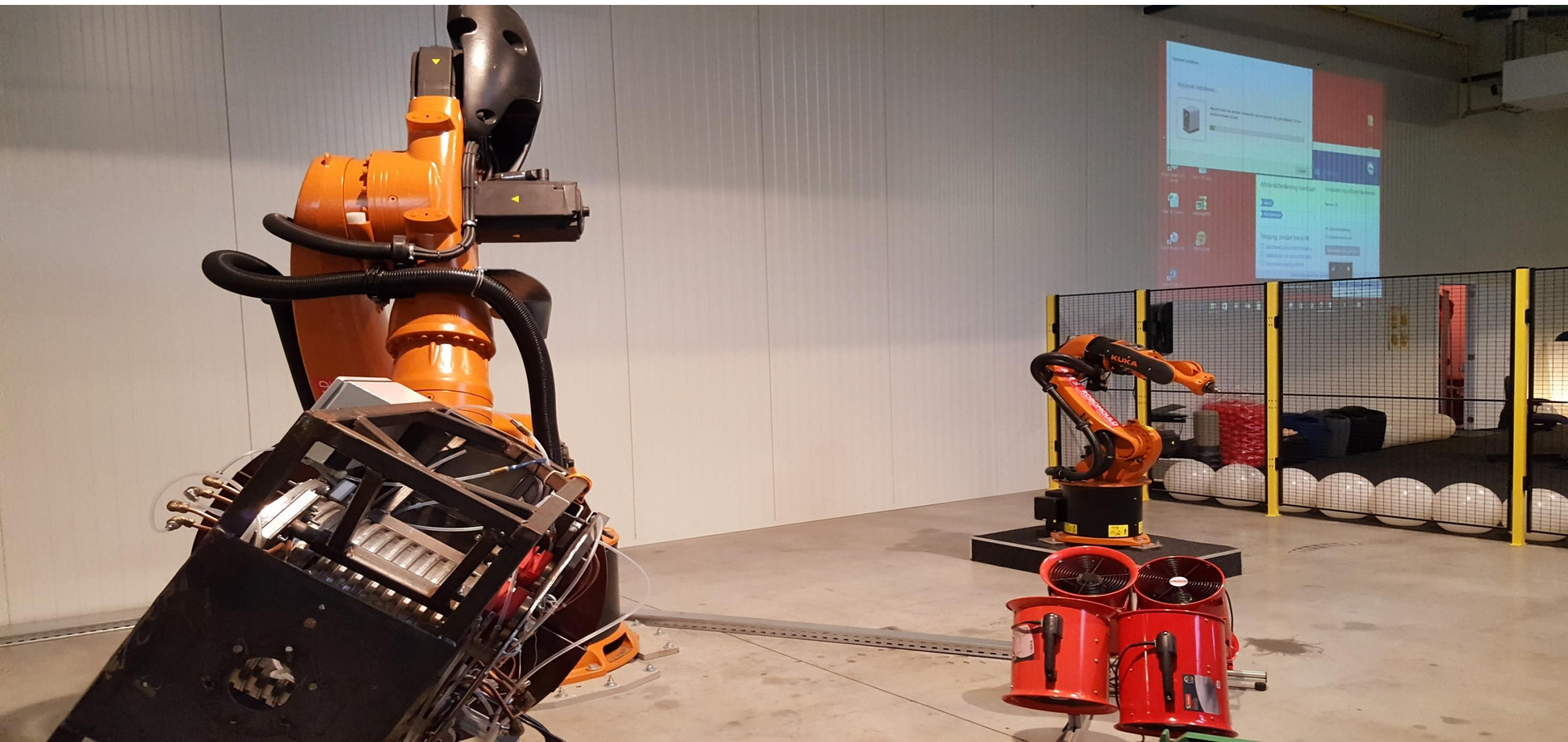


AMS support partners



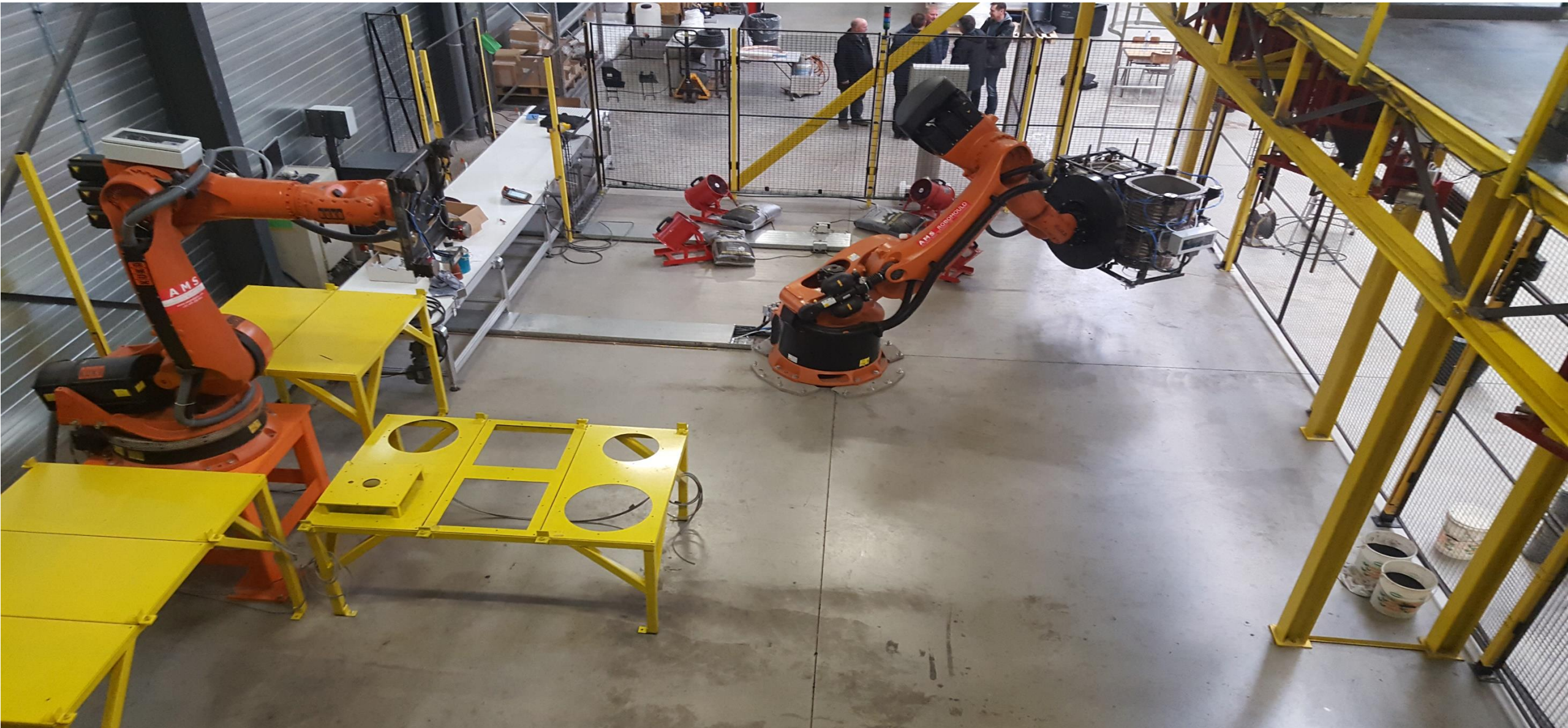
# ROBOMOULD and plastics manufacturing

Demo cell 2 at AMS



# ROBOMOULD and plastics manufacturing

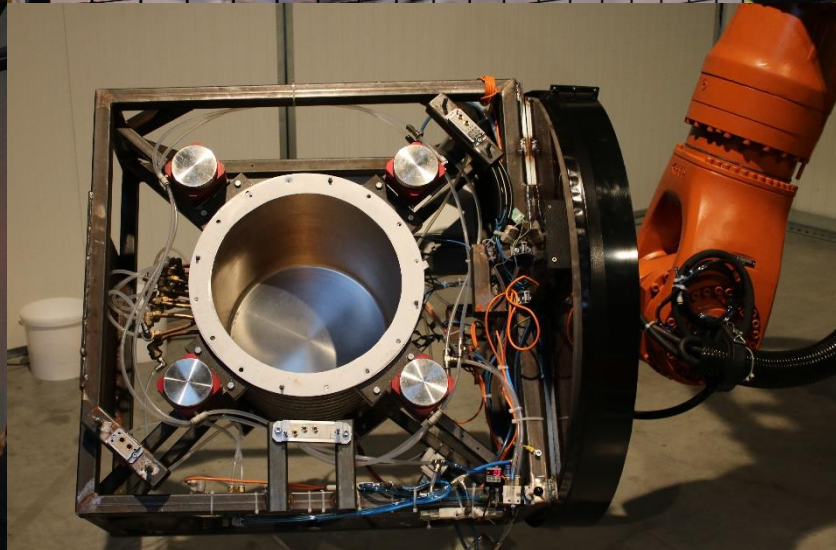
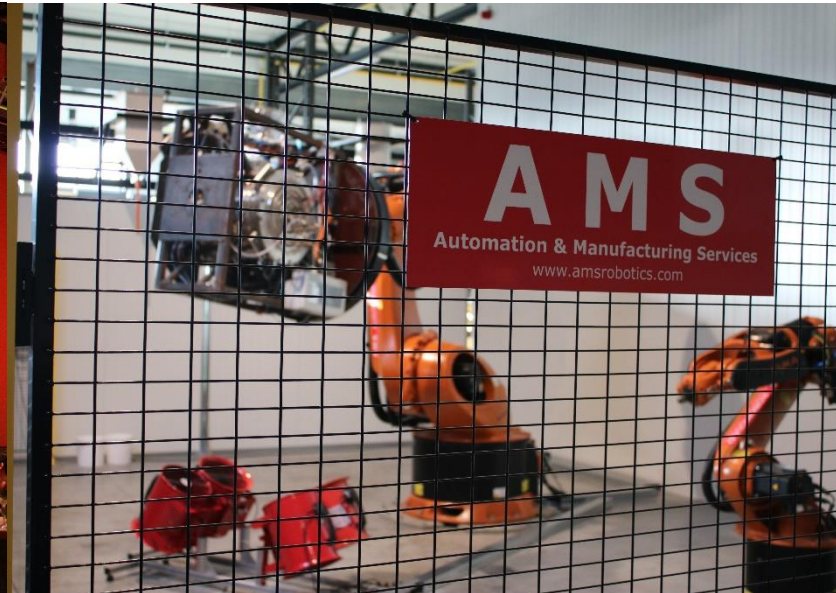
UNMANNED rotational moulding on site at customer



AMS customer FULLY AUTOMATED unmanned system

# AMS Robomould

AFR global visit Dec.2016 organized by TOTAL FINA at AMS



AMS visit AFR 2016



**A M S**

Automation & Manufacturing Services



**AMS TRENTO**  
AUTOMATION

**AAT**®  
*Robotics BV*